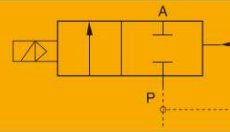


SLG5404 Series 2/2 Solenoid Valve(Normal Close)



SLG5404

2/2 Solenoid Valve (N.C.)



SLG5404-15F



SLG5404-15

High Pressure

Product Features

- * Normal close, brass body
- * High pressure, PTFE seal
- * Piston pilot solenoid valve with high working pressure and temperature
- * To reduce the power consumption of 80% energy-saving

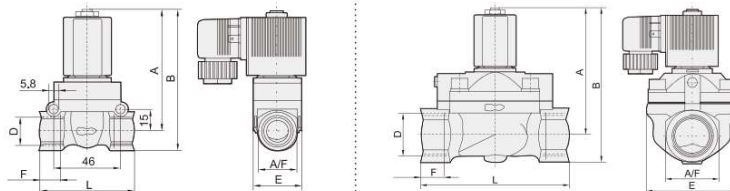
How to Order?

Series No.	Port Size	ID Code	Voltage	Coil Form	Thread Type	
SLG5404	15: 1/2" 20: 3/4" 25: 1"	Blank: Standard type N: Low power type	E1: AC110V E2: AC220V E3: AC380V E4: DC24V	E5: DC12V E6: AC36V E7: AC24V	Blank: DIN connector F: Flying leads	Blank: G P: PT T: NPT

Order Example:

SLG5404 Series solenoid valve, 1/2" port size, AC220V, DIN connector, G thread, ERP code is: SLG5404-15E2

Main Dimension



Model	Port size (G)	Orifice (mm)	A	B	F	E	L	A/F
SLG5404-15	12	1/2"	83	95.5	14	32	65	27
SLG5404-20	20	3/4"	99.5	119	16	60	92	40
SLG5404-25	25	1"	99.5	119	16	60	92	40

Specifications

Model	SLG5404-15E2	SLG5404-20E2	SLG5404-25E2
Working medium	Air, Water, Oil		
Acting type	Pilot type, N.C		
Orifice (mm)	12	20	25
Cv value	2	5	10
Port size	1/2"	3/4"	1"
Working pressure (Bar)	Air :1-50,Liquid:1-50	Air :1-40,Liquid:1-25	Air:1-40,Liquid:1-25
Guaranteed pressure(Bar)	75	60	
Voltage range	-15 ~ 10%		
Working temperature (°C)	-5 ~ 150		
Power consumption	AC:5.5VA, DC:9W		
Body material	Brass		
Seal material	PTFE		

Voltage: AC220V