

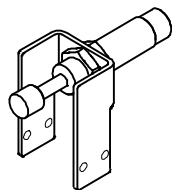
# Shock absorber support

DGEA-...-YSR



# FESTO

(en) Operating  
instructions



8103902  
2018-12b  
[8103904]

Translation of the original instructions

Identification of hazards and instructions on how to prevent them:



**Danger**

Immediate dangers which can lead to death or serious injuries



**Warning**

Hazards that can cause death or serious injuries



**Caution**

Hazards that can cause minor injuries

Other symbols:



**Note**

Material damage or loss of function



Recommendations, tips, references to other documentation



Essential or useful accessories



Information on environmentally sound usage

Text designations:

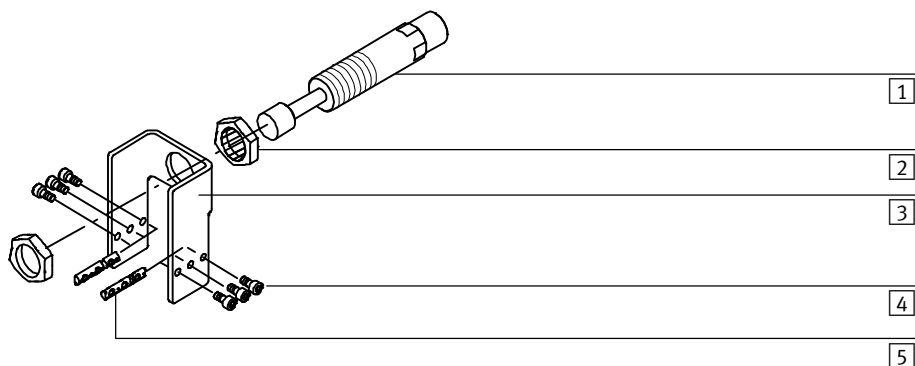
- Activities that may be carried out in any order
- 1. Activities that should be carried out in the order stated
- General lists
- ➔ Result of an action/References to more detailed information

# Shock absorber support type DGEA-...-YSR



For all available product documentation → [www.festo.com/pk](http://www.festo.com/pk)

## 1 Operating parts and connections



- 1 Shock absorber
- 2 Lock nut
- 3 Shock absorber support
- 4 Fastening screws
- 5 Sliding blocks

Fig. 1

## 2 Method of operation and use

The DGEA-...-YSR has been designed for fastening shock absorbers on the cantilever axis type DGEA-... in the area of the stroke reserve.



It is not intended as a fixed stop in the positioning range of the cantilever axis.

## 3 Conditions of use

When fitting to cantilever axes which are already set:

- Check whether a speed limitation or a mass modification to the DGEA-... is necessary.

The use of the shock absorber causes an additional torque on the cantilever arm.

The DGEA-... can only be operated reliably (see also the technical specifications for the shock absorber) if the maximum loading limits are not exceeded.

## 4 Fitting

1. Position the cantilever arm in a mechanical end position (W).
2. Push the cantilever arm out of the end position by the dimension Y.

DGEA-...	Dimension Y [mm]
18	Shock absorber stroke + 13.5 mm
25	Shock absorber stroke + 2 mm
40	Shock absorber stroke + 2 mm

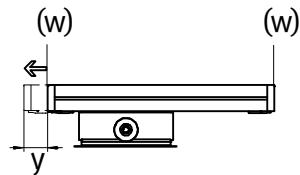


Fig. 2

- Fasten the shock absorber in the hole of the shock absorber support with the aid of the two locking nuts. At the same time make sure that dimension  $s$  on the contracted shock absorber is observed.

DGEA-...	YSR-...	S [mm]
18	...-16-20-C	2
25	...-20-25-C	2
40	...-25-40-C	2

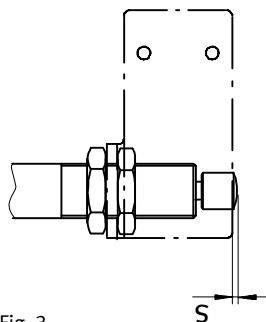


Fig. 3

- Place the sliding blocks in the groove on the side of the cantilever arm. By means of a recess, sliding blocks which cannot be clipped in by tilting, slide into the relevant groove.
- Place the DGEA-...-YSR over the sliding blocks at the same time observing minimum dimension  $L$ .

DGEA-...	L [mm]
18	67
25	60
40	81

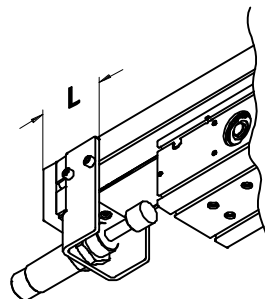


Fig. 4

- Fasten the shock absorber support together with the shock absorber with contact to the drive head.

## 5 Commissioning



### Warning

Sharp edges which close together will squash or even cut off fingers.

- Make sure that nobody can place his/her hand between the head and the side of the shock absorber support.

If the installation is properly protected, it should not be possible to touch the axis until the work mass has come to a complete stand.

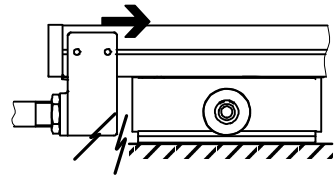


Fig. 5

During the test run of the axis:

- Check whether the shock absorber maintains the two dimensions as shown in Figs. 6 and 7, even during operation.

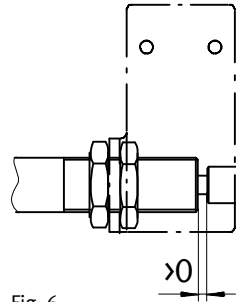


Fig. 6

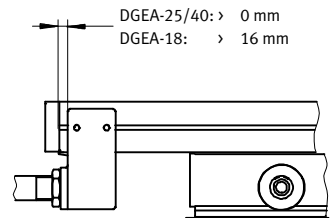


Fig. 7

## 6 Operation

- After every 400 kilometres run, check that the shock absorber support and the shock absorber are still fitted firmly.

If using a shock absorber:

- Check whether the shock absorber support is displaced or is no longer fitted asymmetrically.

In this case it is necessary to reposition the shock absorber support.

We recommend that you check whether the profile cover is correctly seated. Hard knocking may damage the cover connection.

## 7 Accessories

Title	Type
Shock absorber	YSR-...
Sliding block	HMV-... HMBN-...

## 8 Technical specifications

Type	DGEA-18-...-YSR	DGEA-25-...-YSR	DGEA-40-...-YSR
Weight of the shock absorber support (without shock absorber, nuts and fastening elements)	322 g	523 g	1190 g
Materials	Zinc-coated steel		



DGEA-...-YSR

Copyright:  
Festo AG & Co. KG  
Ruiter Straße 82  
73734 Esslingen  
Germany

Phone:  
+49 711 347-0

Fax:  
+49 711 347-2144

E-mail:  
[service\\_international@festo.com](mailto:service_international@festo.com)

Internet:  
[www.festo.com](http://www.festo.com)

Reproduction, distribution or sale of this document or communication of its contents to others without express authorization is prohibited. Offenders will be liable for damages. All rights reserved in the event that a patent, utility model or design patent is registered.