

FESTO

Festo AG & Co. KG

Postfach
73726 Esslingen
Deutschland
+49 711 347-0
www.festo.com

**Adapterbausatz
DHAA-G-H2-B13-HGDT/-HGDD**

Info

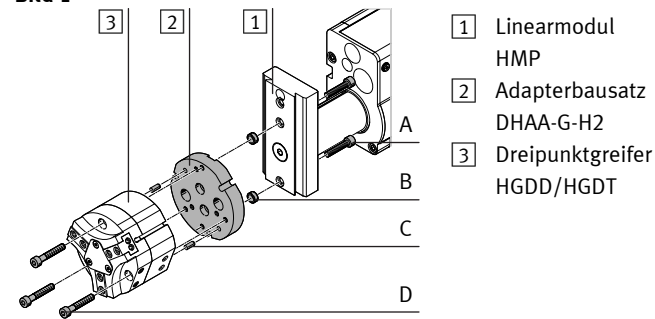
Der Bausatz enthält alle maximal erforderlichen Befestigungselemente.

- Beachten Sie, dass bei einigen Kombinationen Befestigungselemente übrig bleiben.

Montage

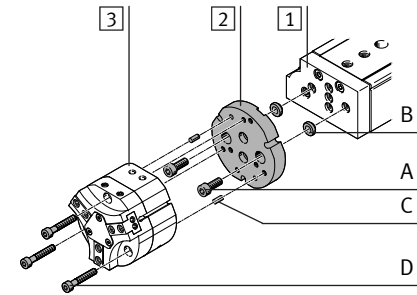
- Wählen Sie die Befestigungselemente (Schrauben, usw.) für Ihre Kombination (→ Tabelle).
- Beachten Sie die Bildzuordnung für Ihre Kombination (→ Tabelle).

Bild 1



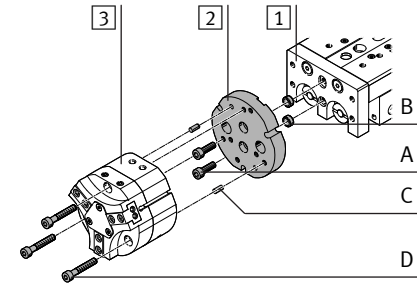
- 1 Linearmodul HMP
- 2 Adapterbausatz DHAA-G-H2
- 3 Dreipunktgreifer HGDD/HGDT

Bild 2



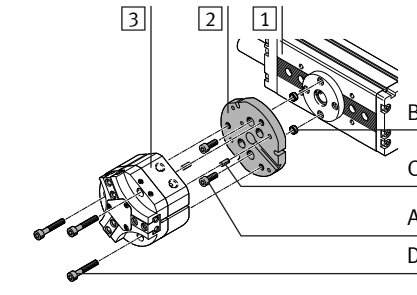
- 1 Mini-Schlitten DGSL/EGSL
- 2 Adapterbausatz DHAA-G-H2
- 3 Dreipunktgreifer HGDD/HGDT

Bild 3



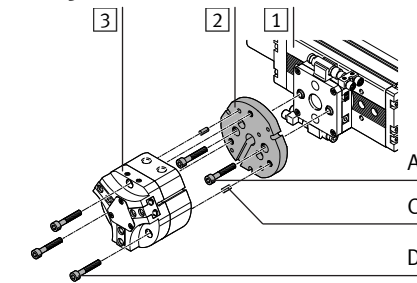
- 1 Mini-Schlitten SLT
- 2 Adapterbausatz DHAA-G-H2
- 3 Dreipunktgreifer HGDD/HGDT

Bild 4



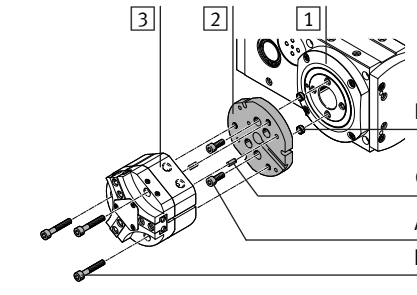
- 1 Schwenkantrieb DRQD
- 2 Adapterbausatz DHAA-G-H2
- 3 Dreipunktgreifer HGDD/HGDT

Bild 5



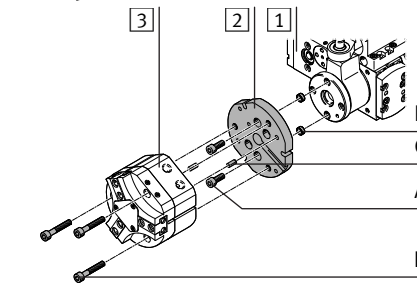
- 1 Schwenkantrieb DRQD-...-E422/-E444
- 2 Adapterbausatz DHAA-G-H2
- 3 Dreipunktgreifer HGDD/HGDT

Bild 6



- 1 Drehmodul ERMB
- 2 Adapterbausatz DHAA-G-H2
- 3 Dreipunktgreifer HGDD/HGDT

Bild 7



- 1 Dreh-Hub-Modul EHMB
- 2 Adapterbausatz DHAA-G-H2
- 3 Dreipunktgreifer HGDD/HGDT

Bild	1	2		2		3		4		5		6		7				
1 Antrieb	HMP-			DGSL-		EGSL-		SLT-		DRQD-		DRQD-...-E422/-E444-		ERMB-		EHMB-		
	16/20	25	20	25/32	20	25/32	20/25	25	75	75	20	25	25	32	32	32	20	
2 Bausatz	DHAA-G-H2-16-		DHAA-G-H2-20-		DHAA-G-H2-16-		DHAA-G-H2-20-		DHAA-G-H2-16-		DHAA-G-H2-20-		DHAA-G-H2-20-		DHAA-G-H2-20-		DHAA-G-H2-20-	
	B13-	B13-	B13G-	B13-	B13-	B13G-	B13-	B13-	B13G-	B13-	B13-	B13G-	B13-	B13G-	B13-	B13G-	B13-	B13G-
	40	50		40	50		40	50		40	50		40	50		40	50	
3 Greifer	HGDD-/HGDT-			HGDD-/HGDT-		HGDD-/HGDT-		HGDD-/HGDT-		HGDD-/HGDT-		HGDD-/HGDT-		HGDD-/HGDT-		HGDD-/HGDT-		
	40	50	50-G1/G2	40	50	50-G1/G2	40	50	50-G1/G2	40	50	50-G1/G2	40	50	50-G1/G2	40	50	
	$M_A^{1)}$ [Nm]																	
A Zylinderschraube nach DIN 912																		
M4x10	3																	
M5x16	6									2x								
M5x25		2x		2x		2x												
M5x30			2x		2x		2x											
M6x12	10												2x			2x	2x	
M6x16					2x		2x		2x		2x	2x						
M6x35														2x				
B Zentrierhülse																		
ZBV-12-9				2x		2x		2x		2x								
ZBH-9		2x		2x						2x			2x			2x	2x	
ZBH-12										2x	2x							
C Zylinderstift nach DIN 6325																		
4m6x10		2x			2x			2x			2x							
5m6x12			2x				2x			2x			2x		2x		2x	
D Zylinderschraube nach DIN 912																		
M5x30	6	3x			3x			3x			3x							
M6x35	10		3x			3x			3x			3x	3x	3x		3x	3x	
M6x60				3x			3x			3x			3x	3x		3x	3x	

1) Toleranzen für nicht tolerierte Anziehdrehmomente M_A
 $M_A > 1 \text{ Nm}$: $\pm 20 \%$

FESTO

Festo AG & Co. KG

Postfach
73726 Esslingen
Germany
+49 711 347-0
www.festo.com

**Adapter kit
DHAA-G-H2-B13-HGDT/-HGDD**

Information

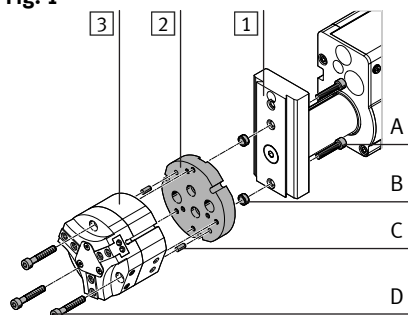
The kit contains all the mounting attachments that may be required.

- Observe that, for some combinations, mounting components may be left over.

Mounting

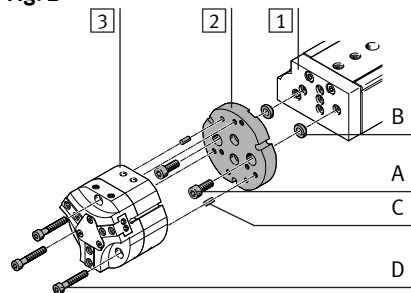
- Select the mounting components (screws, etc.) for your combination (→ Table).
- Observe the illustration assignment for your combination (→ Table).

Fig. 1



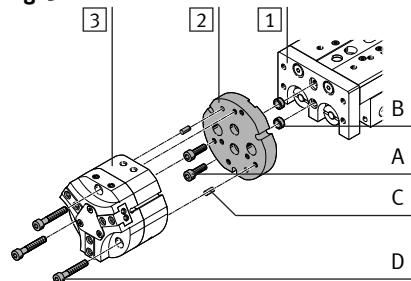
- 1 Linear module HMP
- 2 Adapter kit DHAA-G-H2
- 3 Three-point gripper HGDD/HGDT

Fig. 2



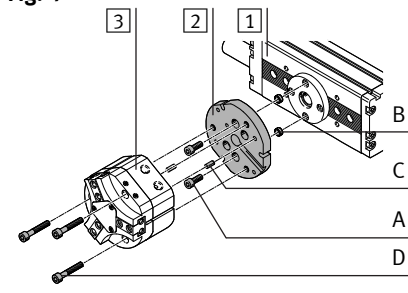
- 1 Mini slide DGSL/EGSL
- 2 Adapter kit DHAA-G-H2
- 3 Three-point gripper HGDD/HGDT

Fig. 3



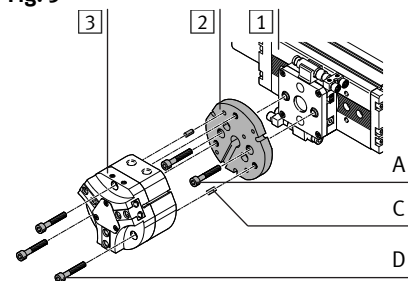
- 1 Mini slide SLT
- 2 Adapter kit DHAA-G-H2
- 3 Three-point gripper HGDD/HGDT

Fig. 4



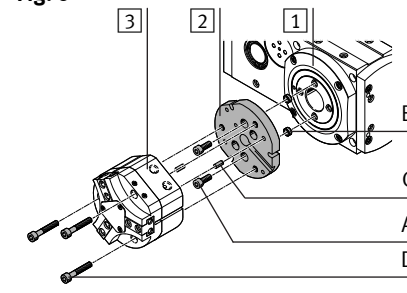
- 1 Semi-rotary drive DRQD
- 2 Adapter kit DHAA-G-H2
- 3 Three-point gripper HGDD/HGDT

Fig. 5



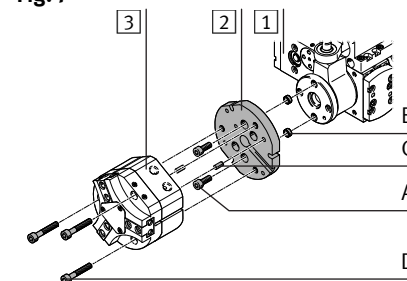
- 1 Semi-rotary drive DRQD-...-E422/-E444
- 2 Adapter kit DHAA-G-H2
- 3 Three-point gripper HGDD/HGDT

Fig. 6



- 1 Rotary module ERMB
- 2 Adapter kit DHAA-G-H2
- 3 Three-point gripper HGDD/HGDT

Fig. 7



- 1 Rotary/lifting module EHMB
- 2 Adapter kit DHAA-G-H2
- 3 Three-point gripper HGDD/HGDT

Fig.	1	2		2		3			4	5	6		7		
1 Drive	HMP-	DGSL-		EGSL-		SLT-			DRQD-	DRQD-...-E422/-E444-	ERMB-		EHMB-		
	16/20 25	20 25/32	20 25/32	20/25	25	75	75	20 25	25	32	32	32	20		
2 Kit	DHAA-G-H2-16-	DHAA-G-H2-20-		DHAA-G-H2-16-		DHAA-G-H2-20-		DHAA-G-H2-16-		DHAA-G-H2-20-		DHAA-G-H2-20-		DHAA-G-H2-20-	
	B13-	B13-	B13G-	B13-	B13- B13G-	B13-	B13- B13G-	B13-	B13- B13G-	B13- B13G-	B13- B13G-	B13- B13G-	B13- B13G-	B13- B13G-	B13- B13G-
	40	50		40	50	40	50	40	50	50	50	50	50	50	
3 Gripper	HGDD-/HGDT-		HGDD-/HGDT-		HGDD-/HGDT-		HGDD-/HGDT-		HGDD-/HGDT-		HGDD-/HGDT-		HGDD-/HGDT-		
	40	50	50-G1/G2	40	50 50-G1/G2	40	50 50-G1/G2	40	50 50-G1/G2	50 50-G1/G2	50 50-G1/G2	50 50-G1/G2	50 50-G1/G2	50 50-G1/G2	
	M _A ¹⁾ [Nm]														
A Socket head screw in accordance with DIN 912															
M4x10	3														
M5x16	6							2x							
M5x25		2x		2x		2x									
M5x30			2x		2x		2x								
M6x12	10									2x			2x	2x	
M6x16					2x		2x		2x		2x				
M6x35											2x				
B Centring sleeve															
ZBV-12-9				2x		2x		2x							
ZBH-9		2x		2x					2x				2x	2x	
ZBH-12									2x	2x					
C Cylindrical dowel pin in accordance with DIN 6325															
4m6x10		2x			2x			2x							
5m6x12			2x						2x				2x	2x	
D Socket head screw in accordance with DIN 912															
M5x30	6	3x			3x			3x							
M6x35	10		3x			3x		3x		3x		3x		3x	
M6x60				3x			3x		3x		3x		3x	3x	

¹⁾ Tolerances for non-toleranced tightening torques M_A
M_A > 1 Nm: ± 20 %