

Adapterbausatz HAPG-SD2 – HGDT/HGDD



Festo AG & Co. KG

Postfach
73726 Esslingen
Deutschland
+49 711 347-0
www.festo.com

Info

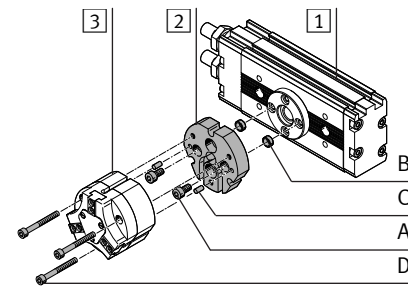
Der Bausatz enthält alle maximal erforderlichen Befestigungselemente.

- Beachten Sie, dass bei einigen Kombinationen Befestigungselemente übrig bleiben.

Zur Montage

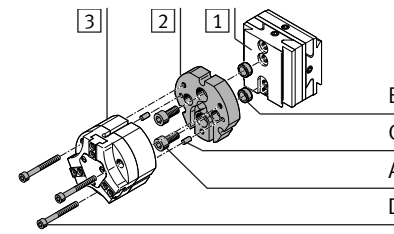
- Wählen Sie die Befestigungselemente (Schrauben, usw.) für Ihre Kombination (→ Tabelle).
- Beachten Sie die Bildzuordnung für Ihre Kombination (→ Tabelle).

Bild 4



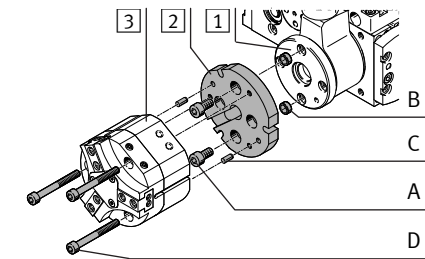
- 1 Schwenkantrieb DRQD
- 2 Adapterbausatz HAPG-SD2
- 3 Dreipunktgreifer HGDD/HGDT

Bild 6



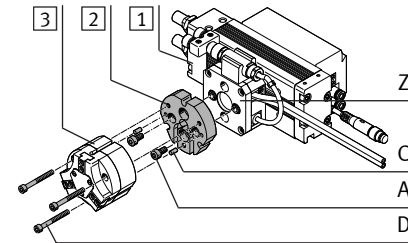
- 1 X/Y-Justiereinheit HMXY
- 2 Adapterbausatz HAPG-SD2
- 3 Dreipunktgreifer HGDD/HGDT

Bild 8



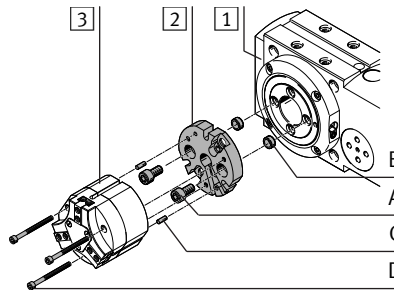
- 1 Dreh-Hub-Modul EHMB
- 2 Adapterbausatz HAPG-SD2
- 3 Dreipunktgreifer HGDD/HGDT

Bild 5



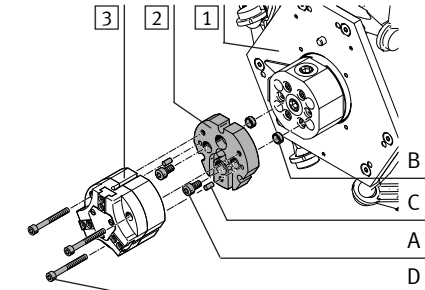
- 1 Schwenkantrieb DRQD...-E422/-E444
- 2 Adapterbausatz HAPG-SD2
- 3 Dreipunktgreifer HGDD/HGDT

Bild 7



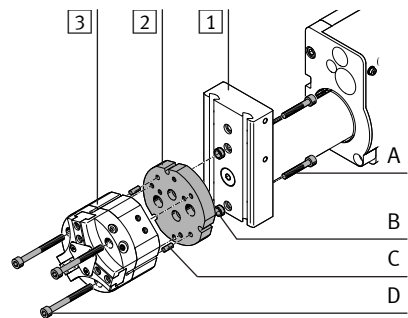
- 1 Drehmodul ERMB
- 2 Adapterbausatz HAPG-SD2
- 3 Dreipunktgreifer HGDD/HGDT

Bild 9



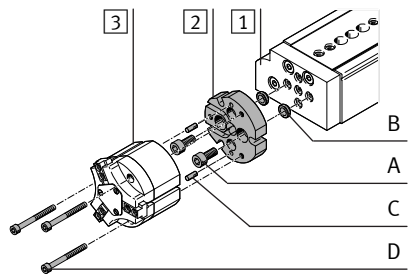
- 1 Stabkinematik EXPT
- 2 Adapterbausatz HAPG-SD2
- 3 Dreipunktgreifer HGDT

Bild 1



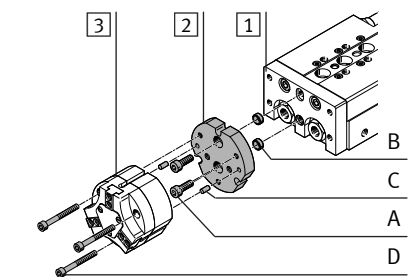
- 1 Linearmodul HMP
- 2 Adapterbausatz HAPG-SD2
- 3 Dreipunktgreifer HGDD/HGDT

Bild 2



- 1 Mini-Schlitten DGSL/EGSL
- 2 Adapterbausatz HAPG-SD2
- 3 Dreipunktgreifer HGDD/HGDT

Bild 3



- 1 Mini-Schlitten SLT
- 2 Adapterbausatz HAPG-SD2
- 3 Dreipunktgreifer HGDD/HGDT

Bild	1	2	3	4	5	6	7	8	9	
1 Antrieb	HMP- 20 25 32	DGSL- 16 25 45/55 75	EGSL- 20 25 16 20/25 20 25 32 25/32 32	SLT- 20 25 16 20/25 20 25 32 25/32 32	DRQD- 16 20 25 20 25 32 25 32 32	DRQD...-E422/-E444- 16 20 25 20 25 32 25 32 32	HMXY- 1	ERMB- 20 25 20 25 32 25 32 32	EHMB- 20	EXPT- 45/70/95/120 ³⁾
2 Bausatz	HAPG-SD2- 36	HAPG-SD2- 32 36 32 36	HAPG-SD2- 32 36 32 33 34	HAPG-SD2- 35 36	HAPG-SD2- 32 33 34 35 36	HAPG-SD2- 32	HAPG-SD2- 33 34 35 36	HAPG-SD2- 34 35 36	HAPG-SD2- 32	HAPG-SD2- 32
3 Greifer	HGDD-/HGDT- 50	HGDD-/HGDT- 25 50 25 50	HGDD-/HGDT- 25 50	HGDD-/HGDT- 25 35 40 50	HGDD-/HGDT- 25 35 40 50	HGDD-/HGDT- 25	HGDD-/HGDT- 25 35 40 50	HGDD-/HGDT- 35 40 50	HGDD-/HGDT- 35 40 50	HGDT- 25
	M_A ¹⁾ [Nm]									
A Zylinderschraube nach DIN 912										
M4x10	3									
M4x30						2x	2x			2x
M5x12	6	2x	2x	2x					2x	
M5x25		2x								
M5x30		2x								
M6x12	10									
M6x16			2x	2x	2x	2x				
M6x35						2x	2x	2x	2x	
B Zentrierhülse										
ZBV-9-7		2x	2x							
ZBV-12-9			2x	2x						
ZBH-7					2x	2x			2x	2x
ZBH-9		2x		2x	2x	2x	2x	2x	2x	2x
ZBH-12			2x							
C Zylinderstift nach DIN 6325										
3m6x8		2x	2x	2x	2x				2x	2x
3m6x10						2x				2x
4m6x10							2x			2x
5m6x12	2x	2x	2x	2x			2x		2x	
D Zylinderschraube nach DIN 912										
M3x35	1,2	3x	3x	3x	3x				3x	3x
M3x40							3x ²⁾		3x ²⁾	3x ²⁾
M3x50							3x ²⁾		3x ²⁾	3x ²⁾
M5x45	6						3x ²⁾		3x ²⁾	3x ²⁾
M5x65							3x ²⁾		3x ²⁾	3x ²⁾
M6x55	10	3x ²⁾	3x ²⁾	3x ²⁾	3x ²⁾			3x ²⁾		3x ²⁾
M6x70		3x ²⁾	3x ²⁾	3x ²⁾	3x ²⁾			3x ²⁾		3x ²⁾

¹⁾ Toleranzen für nicht tolerierte Anziehdrehmomente $M_A > 1 \text{ Nm}$: $\pm 20 \%$

²⁾ HGDD-/HGDT...-G1/G2: lange Schrauben
HGDD-/HGDT: kurze Schrauben

³⁾ -nicht bei EXPT...-T0
-pneumatische Greifer nur bei EXPT...-T2 und EXPT...-T4

FESTO

Festo AG & Co. KG

Postfach
73726 Esslingen
Germany
+49 711 347-0
www.festo.com

Adapter kit HAPG-SD2 – HGDT/HGDD

Information

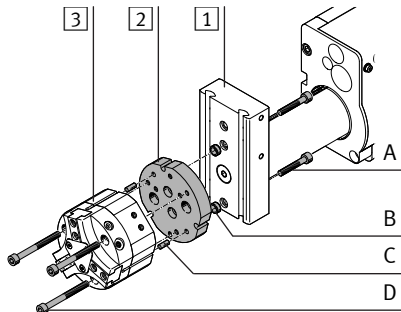
The kit contains all the mounting attachments that may be required.

- Observe that, for some combinations, mounting components may be left over.

On mounting

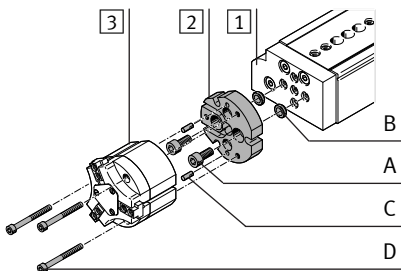
- Select the mounting components (screws, etc.) for your combination (→ Table).
- Observe the illustration assignment for your combination (→ Table).

Fig. 1



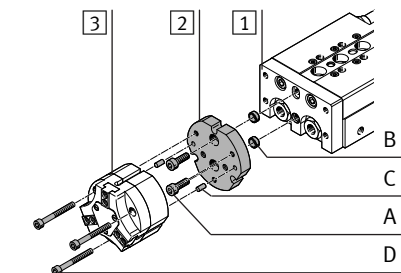
- Linear module HMP
- Adapter kit HAPG-SD2
- Three-point gripper HGDD/HGDT

Fig. 2



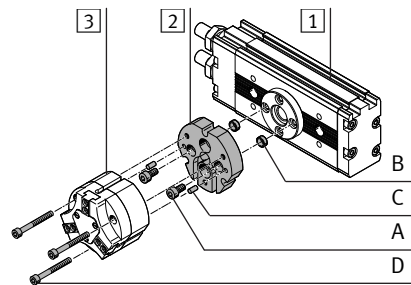
- Mini slide DGSL/EGSL
- Adapter kit HAPG-SD2
- Three-point gripper HGDD/HGDT

Fig. 3



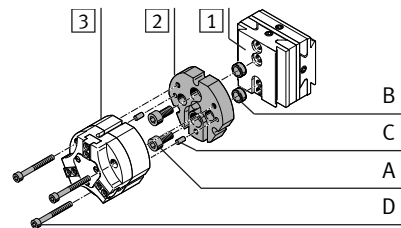
- Mini slide SLT
- Adapter kit HAPG-SD2
- Three-point gripper HGDD/HGDT

Fig. 4



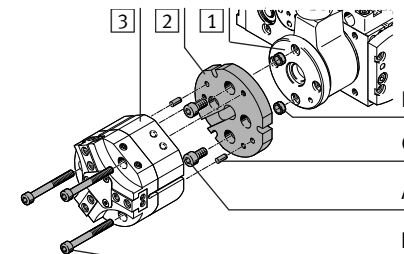
- Semi-rotary drive DRQD
- Adapter kit HAPG-SD2
- Three-point gripper HGDD/HGDT

Fig. 6



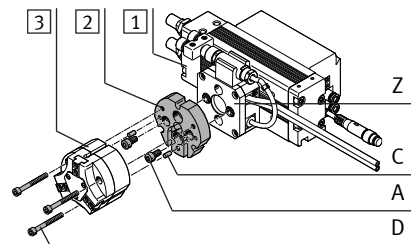
- X/Y adjusting unit HMX
- Adapter kit HAPG-SD2
- Three-point gripper HGDD/HGDT

Fig. 8



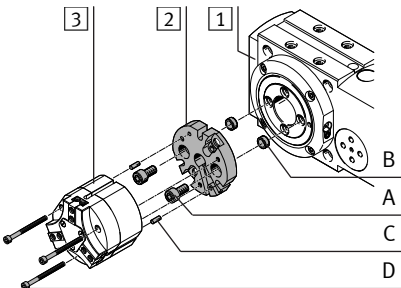
- Rotary/lifting module EHMB
- Adapter kit HAPG-SD2
- Three-point gripper HGDD/HGDT

Fig. 5



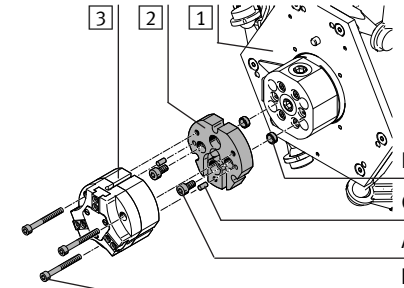
- Semi-rotary drive DRQD...-E422/-E444
- Adapter kit HAPG-SD2
- Three-point gripper HGDD/HGDT

Fig. 7



- Rotary module ERMB
- Adapter kit HAPG-SD2
- Three-point gripper HGDD/HGDT

Fig. 9



- Parallel kinematic system EXPT
- Adapter kit HAPG-SD2
- Three-point gripper HGDT

Fig.	1	2			3	4	5						6	7				8			9		
1 Drive	HMP- 20 25 32	DGSL- 16 25	EGSL- 45/55 75	SLT- 20 25	DRQD- 16 20/25 20 25 32 25/32 32	DRQD...-E422/-E444- 16 20 25 20 25 32 25 32 32						HMX- 1	ERMB- 20 25 20 25 32 25 32 32				EHMB- 20			EXPT- 45/70/95/120 ³⁾			
2 Kit	HAPG-SD2- 36	HAPG-SD2- 32 36 32 36			HAPG-SD2- 32 36		32 33 34	35	36	HAPG-SD2- 32 33 34			35	36	HAPG-SD2- 32 33 34 35 36				HAPG-SD2- 34 35 36			32	
3 Gripper	HGDD-/HGDT- 50	HGDD-/HGDT- 25 50 25 50			HGDD-/HGDT- 25 50		HGDD-/HGDT- 25 35		40	50	HGDD-/HGDT- 25 35			40	50	HGDD-/HGDT- 25 25 35 40 50				HGDD-/HGDT- 35 40 50			25
M _A ¹⁾ [Nm]																							
A Socket head screw in accordance with DIN 912																							
M4x10	3								2x											2x	2x		
M4x30													2x		2x								
M5x12	6		2x		2x		2x													2x			
M5x25		2x																					
M5x30			2x																				
M6x12	10								2x		2x	2x	2x							2x	2x		
M6x16				2x		2x		2x															
M6x35													2x		2x	2x	2x						
B Centring sleeve																							
ZBV-9-7			2x		2x																		
ZBV-12-9				2x		2x																	
ZBH-7								2x		2x				2x		2x				2x	2x		
ZBH-9		2x					2x		2x		2x	2x	2x	2x	2x	2x	2x			2x	2x		
ZBH-12							2x																
C Cylindrical dowel pin in accordance with DIN 6325																							
3m6x8			2x		2x		2x	2x					2x						2x	2x			
3m6x10												2x								2x			
4m6x10													2x						2x		2x		
5m6x12		2x			2x		2x					2x							2x		2x		
D Socket head screw in accordance with DIN 912																							
M3x35	1.2		3x		3x		3x	3x					3x						3x	3x			
M3x40													3x ²⁾							3x ²⁾	3x ²⁾		
M3x50													3x ²⁾							3x ²⁾	3x ²⁾		
M5x45	6														3x ²⁾					3x ²⁾	3x ²⁾		
M5x65															3x ²⁾					3x ²⁾	3x ²⁾		
M6x55	10	3x ²⁾			3x ²⁾		3x ²⁾	3x ²⁾					3x ²⁾							3x ²⁾	3x ²⁾		
M6x70		3x ²⁾			3x ²⁾		3x ²⁾	3x ²⁾					3x ²⁾							3x ²⁾	3x ²⁾		

¹⁾ Tolerances for non-toleranced tightening torques M_A > 1 Nm: ± 20 %

²⁾ HGDD-/HGDT...-G1/G2: long screws
HGDD/HGDT: short screws

³⁾ -Not for EXPT...-T0
- Pneumatic gripper only with EXPT...-T2 and EXPT...-T4