

FESTO

Festo AG & Co. KG

Postfach
73726 Esslingen
Deutschland
+49 711 347-0
www.festo.com

**Adapterbausatz
HAPG-SD2 – HGP/HGR/HGW/
DHPS/DHRS/DHWS**

Info

Der Bausatz enthält alle maximal erforderlichen Befestigungselemente.
• Beachten Sie, dass bei einigen Kombinationen Befestigungselemente übrig bleiben.

Um die Greifrichtung der Greifer zu ändern:

Zu Bild 1, 2, 3 und 4:

- Montieren Sie die Adapterplatte [2] um 90° versetzt auf den Antrieb [1].

Zu Bild 5 und 6:

- Montieren Sie die Abtriebsplatte (Z) um 90° versetzt auf den Antrieb [1].

Zu Bild 7 und 8:

- Beachten Sie, dass eine Änderung der Greifrichtung nicht möglich ist.

Zur Montage

- Wählen Sie die Befestigungselemente (Schrauben usw.) für Ihre Kombination (→ Tabelle).

- Beachten Sie die Bildzuordnung für Ihre Kombination (→ Tabelle).

Bild	1	2	3	4	5	6	7	8																												
[1] Antrieb	ERMB-			EHMB-		DRQD-....-FW-		DRQD-....-FW-		DRQD-....-E422 / E444-		DRQD-....-E422 / E444-		EXPT-		EXPT-																				
	20	25	32	20	25/32	16	16	20	25	32	40/50	16	16	20	25	32	45/70/95/120 ⁴⁾	45/70/95/120 ⁴⁾																		
[2] Bausatz	HAPG-SD2-			HAPG-SD2-		HAPG-SD2-		HAPG-SD2-		HAPG-SD2-		HAPG-SD2-		HAPG-SD2-		HAPG-SD2-																				
	3	4	6	7	9	10	9	10	21	12	1	2	3	4	6	7	9	10	1	2	12															
[3] Greifer	HGP-/DHPS-		16/20	25	16/20	25	25	35	25	35	35	6	10	16/20	16/20	25	16/20	25	16/20	25	16/20	25	25	35	10	16	6									
	HGR-/DHRS-		25	32	25	32	32	40	32	40	40	10	16	25	25	32	25	32	32	40	40	10	16	25	25	32	40	16	25	10						
	HGW-/DHWS-		25	32	25	32	32	40	32	40	40	10	16	25	25	32	25	32	32	40	40	10	16	25	25	32	40	16	25	10						
	M _A ¹⁾ [Nm]																																			
A Gewindebolzen																																				
HAPG-ZB-5	1,2											2x																								
HAPG-ZB-7	3	2x		2x									2x	2x		2x																				
HAPG-ZB-9	10		2x		2x	2x		2x							2x		2x																			
HAPG-ZB-12	20					2x		2x	2x																											
B Zylinderschraube																																				
M4x10 DIN 912	3	2x								2x		2x																								
M4x30 DIN 912																																				
M6x12 DIN 7984	10			2x		2x		2x							2x		2x																			
M6x35 DIN 6912																																				
M8x16 DIN 7984	25									2x																										
C Gewindestift nach DIN 914																																				
M4x6	3	2x		2x		2x		2x				2x		2x		2x																				
M4x12										2x																										
D Zentrierhülse																																				
ZBH-7		2x										2x		2x		2x																				
ZBH-9				2x		2x		2x						2x		2x																				
ZBH-12										2x																										
E Zylinderschraube nach DIN 912																																				
M3x12	1,2											2x																								
F Zentrierhülse																																				
ZBH-5												2x ²⁾																								

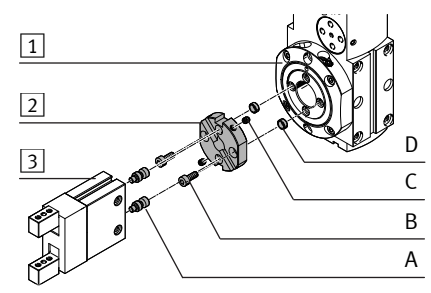
¹⁾ Toleranzen für nicht tolerierte Anziehdrehmomente M_A > 1 Nm: ± 20 %

²⁾ Diese Zentrierhülsen liegen dem Greifer bei.

³⁾ Diese Zentrierhülsen liegen dem Antrieb bei.

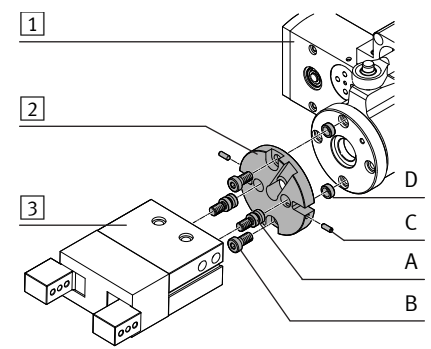
⁴⁾ -nicht bei EXPT-...-T0
-pneumatische Greifer nur bei EXPT-...-T2 und EXPT-...-T4

Bild 1



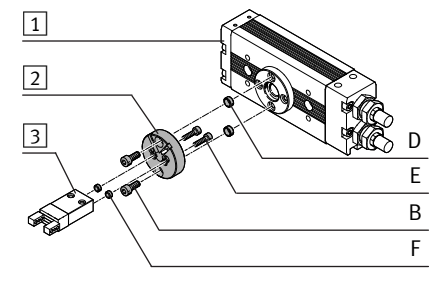
- [1] Drehmodul ERMB
- [2] Adapterbausatz HAPG-SD2
- [3] Greifer HGP/HGR/HGW DHPS/DHRS/DHWS

Bild 2



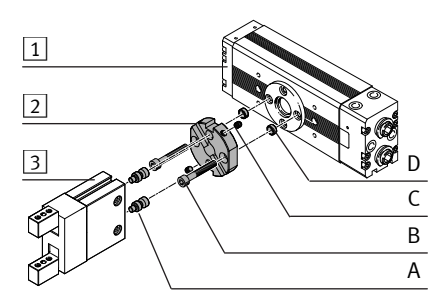
- [1] Dreh-Hub-Modul EHMB
- [2] Adapterbausatz HAPG-SD2
- [3] Greifer HGP/HGR/HGW DHPS/DHRS/DHWS

Bild 3



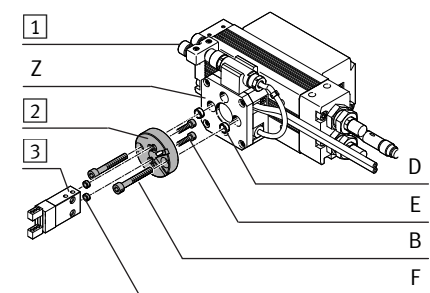
- [1] Schwenkantrieb DRQD-16-...-FW
- [2] Adapterbausatz HAPG-SD2-12
- [3] Greifer HGP/HGR/HGW DHPS/DHRS/DHWS

Bild 4



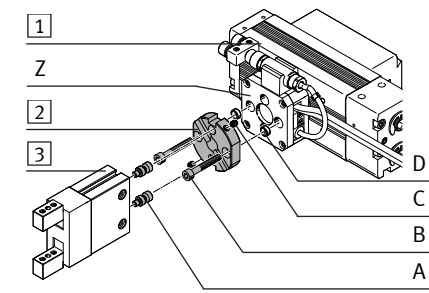
- [1] Schwenkantrieb DRQD-...-FW
- [2] Adapterbausatz HAPG-SD2
- [3] Greifer HGP/HGR/HGW DHPS/DHRS/DHWS

Bild 5



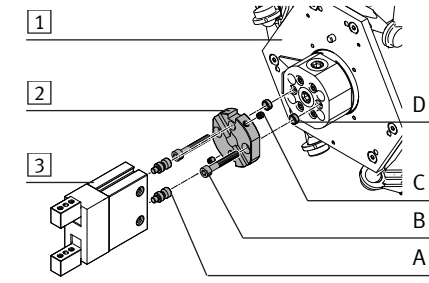
- [1] Schwenkantrieb mit Flanschwellen-durchführung DRQD-16-...-E422/E444
- [2] Adapterbausatz HAPG-SD2-12
- [3] Greifer HGP/HGR/HGW DHPS/DHRS/DHWS

Bild 6



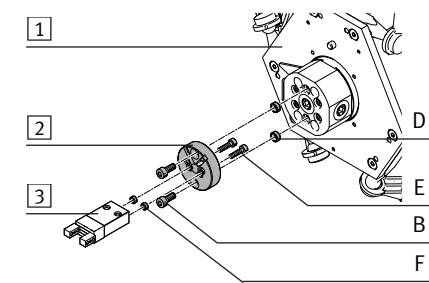
- [1] Schwenkantrieb mit Flanschwellen-durchführung DRQD-...-E422/E444
- [2] Adapterbausatz HAPG-SD2
- [3] Greifer HGP/HGR/HGW DHPS/DHRS/DHWS

Bild 7



- [1] Stabkinematik EXPT
- [2] Adapterbausatz HAPG-SD2
- [3] Greifer HGP/HGR/HGW DHPS/DHRS/DHWS

Bild 8



- [1] Stabkinematik EXPT
- [2] Adapterbausatz HAPG-SD2-12
- [3] Greifer HGP/HGR/HGW DHPS/DHRS/DHWS

FESTO

Festo AG & Co. KG

Postfach
73726 Esslingen
Germany
+49 711 347-0
www.festo.com

**Adapter kit
HAPG-SD2 – HGP/HGR/HGW/
DHPS/DHRS/DHWS**

Information

The kit contains all the mounting attachments that may be required.

- Observe that, for some combinations, mounting components may be left over.

To change the gripping direction of the gripper:

On Fig. 1, 2, 3 and 4:

- Mount the adapter plate [2] off-set 90° onto the drive [1].

On Fig. 5 and 6:

- Mount the through-feed cover plate (Z) off-set 90° onto the drive [1].

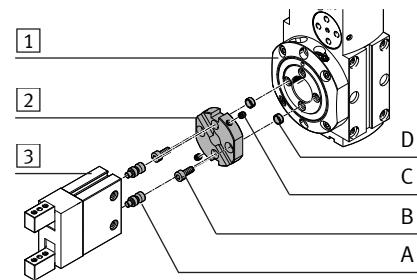
On Fig. 7 and 8:

- Observe that a change in the gripping direction is not possible.

On mounting

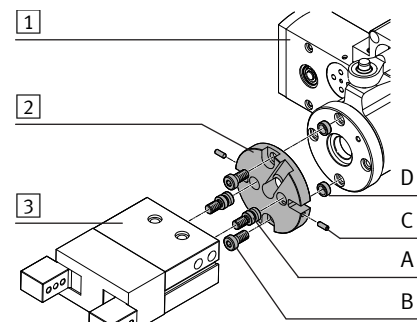
- Select the mounting components (screws, etc.) for your combination (→ Table).
- Observe the illustration assignment for your combination (→ Table).

Fig. 1



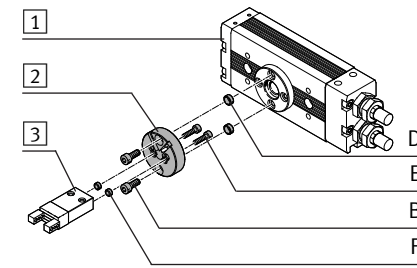
- [1] Rotary module
ERMB
- [2] Adapter kit
HAPG-SD2
- [3] Gripper
HGP/HGR/HGW
DHPS/DHRS/DHWS

Fig. 2



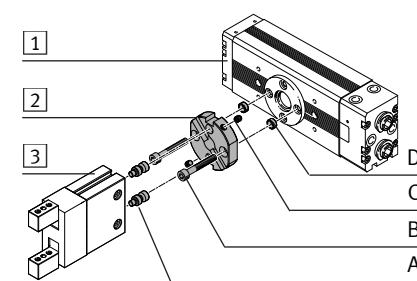
- [1] Rotary/lifting module
EHMB
- [2] Adapter kit
HAPG-SD2
- [3] Gripper
HGP/HGR/HGW
DHPS/DHRS/DHWS

Fig. 3



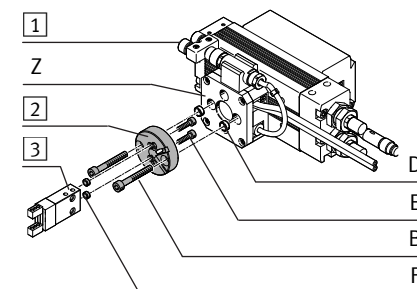
- [1] Semi-rotary drive
DRQD-16-...-FW
- [2] Adapter kit
HAPG-SD2-12
- [3] Gripper
HGP/HGR/HGW
DHPS/DHRS/DHWS

Fig. 4



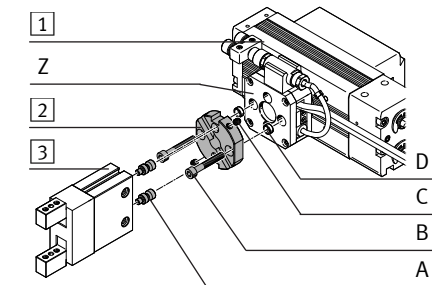
- [1] Semi-rotary drive
DRQD-...-FW
- [2] Adapter kit
HAPG-SD2
- [3] Gripper
HGP/HGR/HGW
DHPS/DHRS/DHWS

Fig. 5



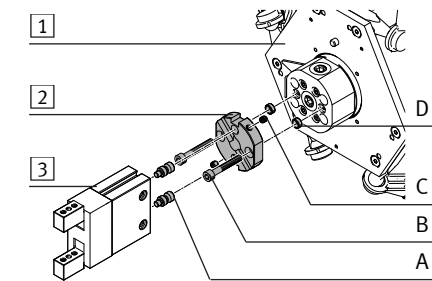
- [1] Semi-rotary drive with
flanged shaft
with energy through-feed
DRQD-16-...-E422/E444
- [2] Adapter kit
HAPG-SD2-12
- [3] Gripper
HGP/HGR/HGW
DHPS/DHRS/DHWS

Fig. 6



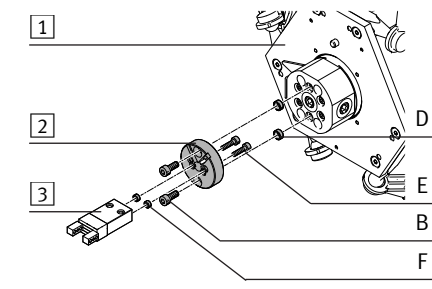
- [1] Semi-rotary drive with
flanged shaft with
energy through-feed
DRQD-...-E422/E444
- [2] Adapter kit
HAPG-SD2
- [3] Gripper
HGP/HGR/HGW
DHPS/DHRS/DHWS

Fig. 7



- [1] Parallel kinematic
system EXPT
- [2] Adapter kit
HAPG-SD2
- [3] Gripper
HGP/HGR/HGW
DHPS/DHRS/DHWS

Fig. 8



- [1] Parallel kinematic
system EXPT
- [2] Adapter kit
HAPG-SD2-12
- [3] Gripper
HGP/HGR/HGW
DHPS/DHRS/DHWS

Fig.	1	2	3	4	5	6	7	8																
[1] Drive	ERMB-	EHMB-	DRQD-...-FW-	DRQD-...-FW-	DRQD-...- E422 / E444-	DRQD-...- E422 / E444-	EXPT-	EXPT-																
	20	25	32	20	25/32	16	16	20	25	32	40/50	16	16	20	25	32	45/70/95/120 ⁴⁾	45/70/95/120 ⁴⁾						
[2] Kit	HAPG-SD2-	HAPG-SD2-	HAPG-SD2-	HAPG-SD2-	HAPG-SD2-	HAPG-SD2-	HAPG-SD2-	HAPG-SD2-																
	3	4	6	7	9	10	9	10	21	12	1	2	3	4	6	7	9	10	1	2	12			
[3] Gripper	HGP-/DHPS-	16/20	25	16/20	25	25	35	25	35	35	6	10	16/20	16/20	25	16/20	25	35	35	6	10	16	6	
	HGR-/DHRS-	25	32	25	32	32	40	32	40	40	10	16	25	25	32	25	32	32	40	40	10	16	25	10
	HGW-/DHWS-	25	32	25	32	32	40	32	40	40	10	16	25	25	32	25	32	32	40	40	10	16	25	10
	M _A ¹⁾ [Nm]																							

A Threaded bolts	
HAPG-ZB-5	1.2
HAPG-ZB-7	3
HAPG-ZB-9	10
HAPG-ZB-12	20
B Socket head screw	
M4x10 DIN 912	3
M4x30 DIN 912	
M6x12 DIN 7984	10
M6x35 DIN 6912	
M8x16 DIN 7984	25
C Threaded pin in accordance with DIN 914	
M4x6	3
M4x12	
D Centring sleeve	
ZBH-7	
ZBH-9	
ZBH-12	
E Socket head screw in accordance with DIN 912	
M3x12	1.2
F Centring sleeve	
ZBH-5	

¹⁾ Tolerances for non-toleranced tightening torques M_A > 1 Nm: ± 20 %

²⁾ These centring sleeves are included with the gripper.

³⁾ These centring sleeves are included with the drive.

⁴⁾ -Not for EXPT-...-T0
-Pneumatic gripper only with EXPT-...-T2 and EXPT-...-T4