

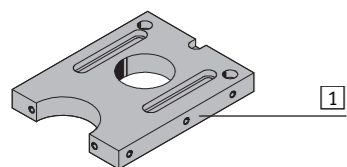
Versteifungsbausatz HMVV-RP/FP

FESTO

Festo AG & Co. KG

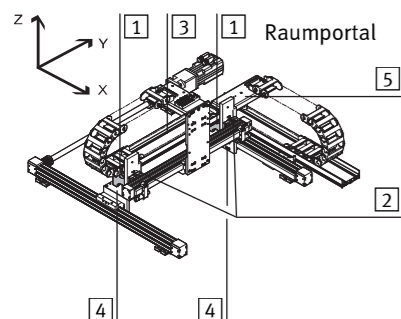
Postfach
D-73726 Esslingen
++49(0)711/347-0
www.festo.com

1. Teileliste



- 1 Versteifungsbausatz HMVV-RP/FP

Bestimmungsgemäß dient der Versteifungsbausatz 1 als zusätzliche Verstärkung zwischen den X- und Y-Achsen beim Aufbau von Raumportalsystemen.



- 2 Grundbausatz HMV...-RP/FP...
- 3 Auflageprofil HMIA-E07-X
- 4 Adapterbausatz HMVS-RF.../HMVW-DL...
- 5 Installationsbausatz HMIXF-RP/FP...

→ Hinweis

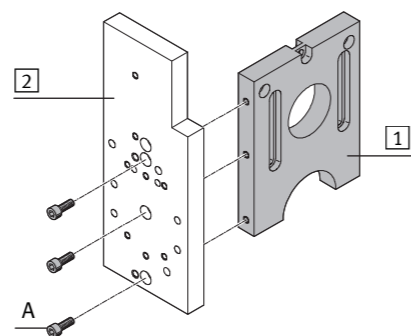
- Beachten Sie, dass nur Befestigungskombinationen aus der Tabelle zulässig sind.
- Halten Sie die zulässigen Anziehdrehmomente ein (→ Tabelle).

i Info

- Beachten Sie die Montager Reihenfolge → Montageübersicht (beiliegend in HMVS-DL25/40). Der Bausatz 1 enthält alle maximal erforderlichen Befestigungselemente.
- Beachten Sie, dass bei einigen Kombinationen Befestigungselemente übrig bleiben.
- Wählen Sie die Befestigungselemente (Schrauben usw.) für Ihre Kombination (→ Tabelle).
- Beachten Sie die Bildzuordnung für Ihre Kombination (→ Tabelle).

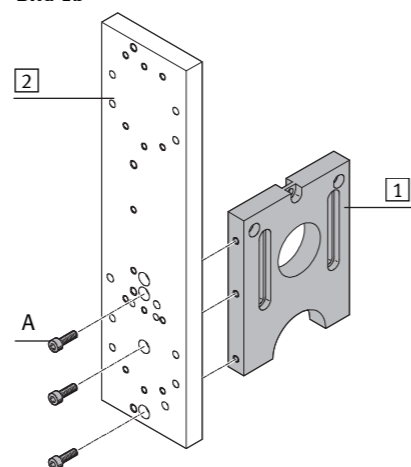
2. Montage Versteifungsbausatz 1

Bild 1a



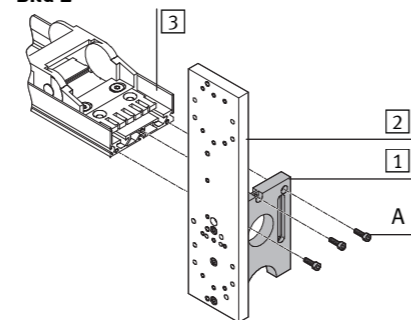
- 1 Versteifungsbausatz HMVV-RP/FP
- 2 Grundbausatz HMVM-RP/FP...

Bild 1b



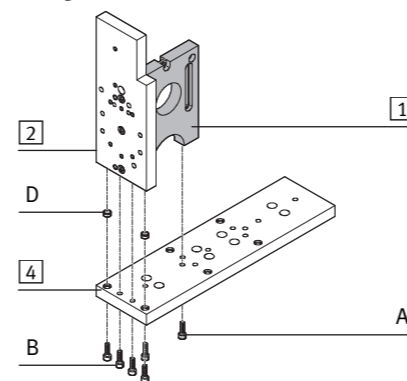
- 1 Versteifungsbausatz HMVV-RP/FP
- 2 Grundbausatz HMVD-RP/FP...

Bild 2



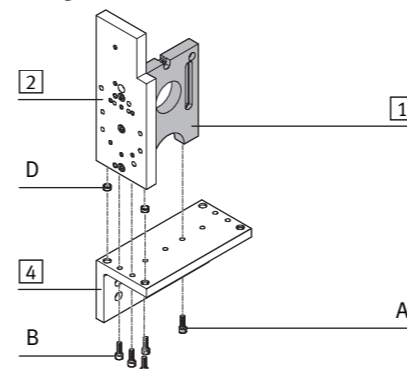
- 1 Versteifungsbausatz HMVV-RP/FP
- 2 Grundbausatz HMV...-RP/FP...
- 3 Auflageprofil HMIA-E07-X

Bild 3a



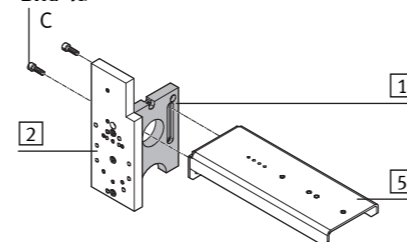
- 1 Versteifungsbausatz HMVV-RP/FP
- 2 Grundbausatz HMV...-RP/FP...
- 4 Adapterbausatz HMVS-RF...

Bild 3b



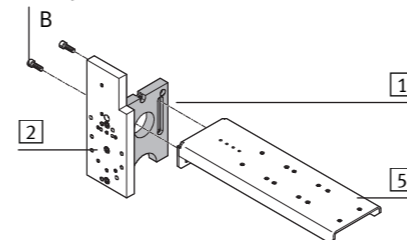
- 1 Versteifungsbausatz HMVV-RP/FP
- 2 Grundbausatz HMV...-RP/FP...
- 4 Adapterbausatz HMVW-DL...

Bild 4a



- 1 Versteifungsbausatz HMVV-RP/FP
- 2 Grundbausatz HMV...-RP/FP...
- 5 Installationsbausatz HMIXF-RP/FP

Bild 4b



- 1 Versteifungsbausatz HMVV-RP/FP
- 2 Grundbausatz HMV...-RP/FP...
- 5 Installationsbausatz HMIXF-RP/FP-2

1 Bausatz	HMVV-RP/FP						
Anbaukomponente	2	3	4	5			
	HMVM-RP/FP...	HMVD-RP/FP...	HMIA-E07-X	HMSV-RF...	HMVW-DL...V	HMIXF-RP/FP	HMIXF-RP/FP-2
→ Bild	1a	1b	2	3a	3b	4a	4b
	M _A ¹⁾ [Nm]						
A Zylinderschraube nach DIN 912							
M5x16	6	3x	3x	2x	2x		
Befestigungselemente im Lieferumfang der Anbaukomponenten							
B Zylinderschraube nach DIN 912							
M5x16	6			4x	3x		
M6x20	10						2x
C Zylinderschraube nach DIN 6912							
M6x18	10					2x	
D Zentrierhülse							
ZBH-9				2x	2x		

¹⁾ Toleranzen für nicht tolerierte Anziehdrehmomente M_A ± 20%

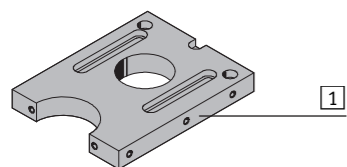
Reinforcing kit HMVV-RP/FP

FESTO

Festo AG & Co. KG

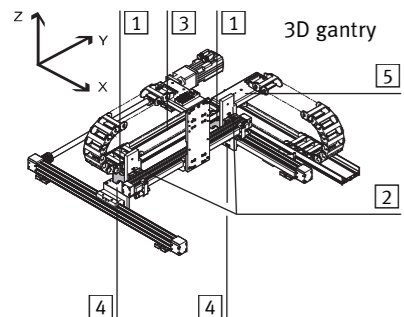
Postfach
D-73726 Esslingen
++49(0)711/347-0
www.festo.com

1. Parts list



- 1 Reinforcing kit HMVV-RP/FP

The reinforcing kit 1 has been designed as an additional reinforcement between the X and Y-axes when setting up 3D gantry systems.



- 2 Basic kit HMV...-RP/FP...
- 3 Support profile HMIA-E07-X
- 4 Adapter kit HMVS-RF.../HMVW-DL...
- 5 Installation kit HMIXF-RP/FP...

→ Note

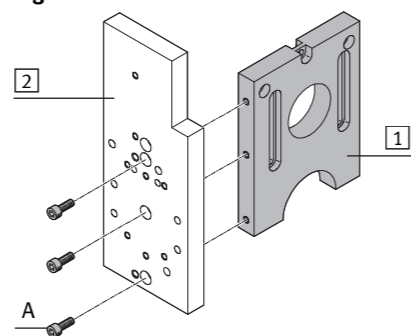
- Note that only the assembly combinations shown in the table are permissible.
- Observe the permitted tightening torques (→ Table).

i Information

- Observe the mounting sequence
→ Assembly overview (included in HMVS-DL25/40).
- The kit 1 includes the maximum required number of mounting attachments.
- Please note that mounting components may be left over with some combinations.
- Select the mounting components (screws etc.) for your combination (→ Table).
- Observe the reference figures/illustrations for your combination (→ Table).

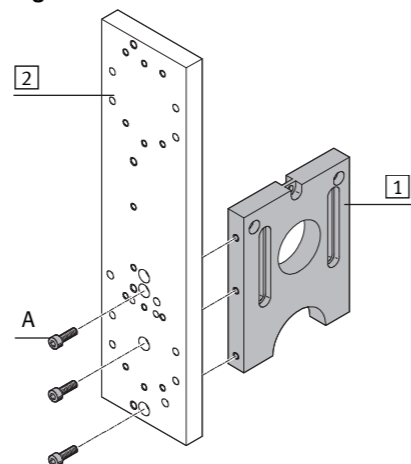
2. Mounting the reinforcing kit 1

Fig. 1a



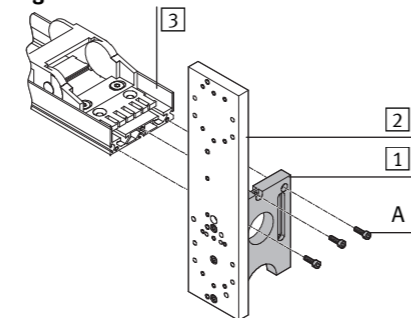
- 1 Reinforcing kit HMVV-RP/FP
- 2 Basic kit HMVM-RP/FP...

Fig. 1b



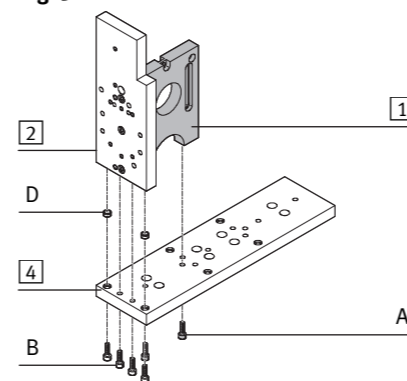
- 1 Reinforcing kit HMVV-RP/FP
- 2 Basic kit HMVD-RP/FP...

Fig. 2



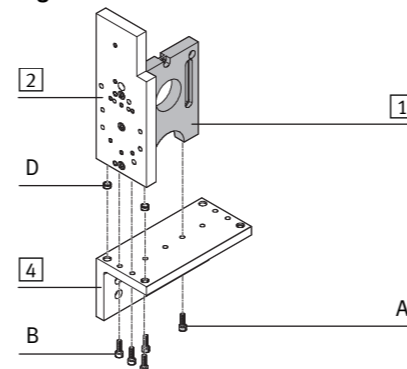
- 1 Reinforcing kit HMVV-RP/FP
- 2 Basic kit HMV...-RP/FP...
- 3 Support profile HMIA-E07-X

Fig. 3a



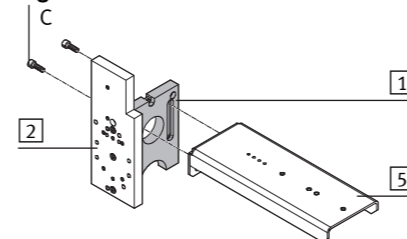
- 1 Reinforcing kit HMVV-RP/FP
- 2 Basic kit HMV...-RP/FP...
- 4 Adapter kit HMVS-RF...

Fig. 3b



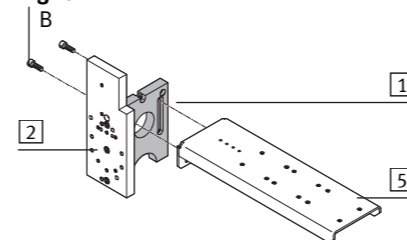
- 1 Reinforcing kit HMVV-RP/FP
- 2 Basic kit HMV...-RP/FP...
- 4 Adapter kit HMVW-DL...

Fig. 4a



- 1 Reinforcing kit HMVV-RP/FP
- 2 Basic kit HMV...-RP/FP...
- 5 Installation kit HMIXF-RP/FP

Fig. 4b



- 1 Reinforcing kit HMVV-RP/FP
- 2 Basic kit HMV...-RP/FP...
- 5 Installation kit HMIXF-RP/FP-2

1 Kit	HMVV-RP/FP						
Attachment component	2	3	4	5			
	HMVM-RP/FP-...	HMVD-RP/FP-...	HMIA-E07-X	HMSV-RF...	HMVW-DL...V	HMIXF-RP/FP	HMIXF-RP/FP-2
→ Fig.	1a	1b	2	3a	3b	4a	4b
	M _A ¹⁾ [Nm]						
A Socket head screw to DIN 912							
M5x16	6	3x	3x	2x	2x		
Mounting components included with attachment components							
B Socket head screw to DIN 912							
M5x16	6			4x	3x		
M6x20	10						2x
C Socket head screw to DIN 6912							
M6x18	10					2x	
D Centring sleeve							
ZBH-9				2x	2x		

¹⁾ Tolerance for non-toleranced tightening torques M_A ± 20%