

Threaded fittings NPFC

FESTO




Threaded fittings NPFC

Technical data

Operating and environmental conditions	
Operating pressure [bar]	-0.95 ... 50
Operating medium	Compressed air to ISO 8573-1:2010 [-:-:-]
	Gases on request
	Liquids on request
Ambient temperature [°C]	-20 ... +150
Corrosion resistance class CRC ¹⁾	1

1) Corrosion resistance class CRC 1 to Festo standard FN 940070
 Low corrosion stress. For dry indoor applications or transport and storage protection. Also applies to parts behind covers, in the non-visible interior area, and parts which are covered in the application (e.g. drive trunnions).



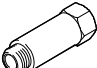



Materials	
Threaded fitting	Nickel-plated brass
Note on materials	RoHS-compliant

 - Note

<p>When using R threaded studs, we recommend sealing using thread sealing tape GWB-0,1 (part no. 9076).</p>	<p>When using M and G threaded studs, an additional axial sealing ring is required (preferably soft aluminium Al 99.5).</p>
---	---

Threaded fittings NPFC

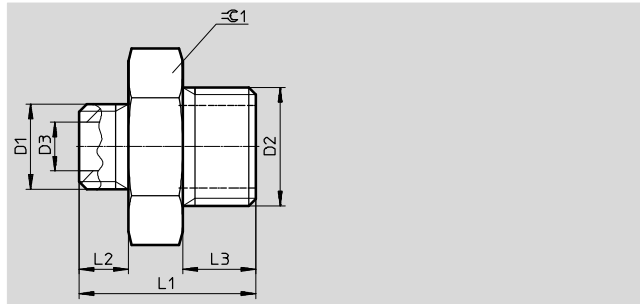
Product range overview

Design	Design	Type	Connection D1			Connection D2			→ Page/ Internet
			M thread	G thread	R thread	M thread	G thread	R thread	
Straight design	Sleeve								
		NPFC-S	M5	–	–	–	–	–	6
			–	G1/8					
				G1/4					
				G3/8					
				G1/2					
				G3/4					
	Reducing sleeve								
		NPFC-R	M5	–	–	–	G1/8	–	6
			–	G1/8			G1/4, G3/8, G1/2		
			G1/4			G3/8, G1/2			
			G3/8			G1/2			
			G1/2			G3/4, G1			
			G3/4			G1			
Extension									
	NPFC-E...	M5	–	–	M5	–	–	7	
		–	G1/8		–	G1/8			
			G1/4			G1/4			
			G3/8			G3/8			
			G1/2			G1/2			
Double nipple									
	NPFC-D	M3	–	–	M3	–	–	8	
		M5			M5	G1/8			
		M7			–	G1/8			
		–	G1/8			G1/8, G1/4, G3/8			
			G1/4			G1/4, G3/8, G1/2			
			G3/8			G3/8, G1/2			
			G1/2			G1/2, G3/4			
			G3/4			G3/4			
			–	R1/8		–	R1/8, R1/4, R3/8		
				R1/4			R1/4, R3/8, R1/2		
				R3/8			R3/8, R1/2		
				R1/2			R1/2, R3/4		
				R3/4			R3/4		
		R1			R1				
Reducing nipple – internal thread/external thread									
	NPFC-R	M5	–	–	–	G1/8	–	9	
		–	G1/8			G1/4, G3/8			
			G1/4			G3/8			
			G3/8			G1/2			
Reducing nipples – external thread/internal thread									
	NPFC-R	M5	–	–	M3	–	–	10	
		M7			M5				
		–	G1/8			M5	G1/8		
			G1/4			–	G1/8, G1/4		
			G3/8				G1/4, G3/8		
			G1/2				G1/4, G3/8, G1/2		
			G3/4				G1/2, G3/4		

Threaded fittings NPFC

Technical data

Double nipple NPFC-D
M/G thread



Dimensions and ordering data										
Connection		D3	L1	L2	L3	≈C1	Weight/piece [g]	Part no.	Type	PU ¹⁾
D1	D2	∅								
M3	M3	1.5	10	2.8	2.8	5	1	8069210	NPFC-D-2M3-M	10
M5	M5	2.5	11.5	4	4	8	2.47	8030267	NPFC-D-2M5-M	10
	G ¹ / ₈	2.5	14.5	4	6	14	8.8	8069211	NPFC-D-M5-G18-M	10
M7	G ¹ / ₈	4	15.5	4	6	14	8.7	8030268	NPFC-D-M7-G18-M	10
G ¹ / ₈	G ¹ / ₈	5.5	16.5	6	6	14	9.7	8030269	NPFC-D-2G18-M	10
								8069212	NPFC-D-2G18-M-P100	100
								8030270	NPFC-D-G18-G14-M	10
G ¹ / ₄	G ¹ / ₄	5.5	19	6	8	17	15.8	8030271	NPFC-D-G18-G38-M	10
								8030272	NPFC-D-2G14-M	10
								8069213	NPFC-D-2G14-M-P100	100
G ¹ / ₄	G ³ / ₈	8	22	8	9	19	22.4	8030273	NPFC-D-G14-G38-M	10
								8030274	NPFC-D-G14-G12-M	10
G ³ / ₈	G ³ / ₈	11	23	9	9	19	24	8030275	NPFC-D-2G38-M	10
								8069214	NPFC-D-2G38-M-P50	50
								8030276	NPFC-D-G38-G12-M	10
G ¹ / ₂	G ¹ / ₂	15	25.5	10	10	24	35.75	8030277	NPFC-D-2G12-M	10
								8069215	NPFC-D-2G12-M-P50	50
								8069216	NPFC-D-G12-G34-M	10
G ³ / ₄	G ³ / ₄	10	29.5	12	12	30	63.7	8069217	NPFC-D-2G34-M	10

1) Packaging unit quantity