

Threaded fittings NPFC

FESTO




Threaded fittings NPFC

Technical data

Operating and environmental conditions	
Operating pressure [bar]	-0.95 ... 50
Operating medium	Compressed air to ISO 8573-1:2010 [-:-:-]
	Gases on request
	Liquids on request
Ambient temperature [°C]	-20 ... +150
Corrosion resistance class CRC ¹⁾	1

1) Corrosion resistance class CRC 1 to Festo standard FN 940070
 Low corrosion stress. For dry indoor applications or transport and storage protection. Also applies to parts behind covers, in the non-visible interior area, and parts which are covered in the application (e.g. drive trunnions).



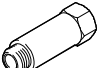



Materials	
Threaded fitting	Nickel-plated brass
Note on materials	RoHS-compliant

 - Note

<p>When using R threaded studs, we recommend sealing using thread sealing tape GWB-0,1 (part no. 9076).</p>	<p>When using M and G threaded studs, an additional axial sealing ring is required (preferably soft aluminium Al 99.5).</p>
---	---

Threaded fittings NPFC

Product range overview

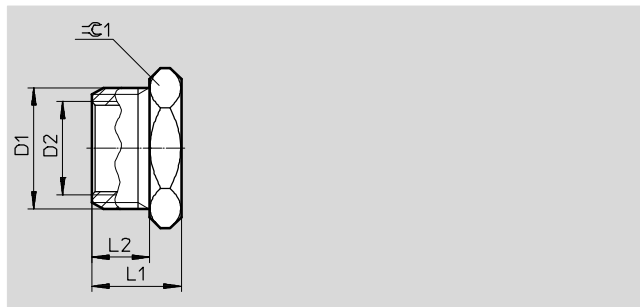
Design	Design	Type	Connection D1			Connection D2			→ Page/ Internet
			M thread	G thread	R thread	M thread	G thread	R thread	
Straight design	Sleeve								
		NPFC-S	M5	–	–	–	–	–	6
			–	G1/8					
				G1/4					
				G3/8					
				G1/2					
				G3/4					
	Reducing sleeve								
		NPFC-R	M5	–	–	–	G1/8	–	6
			–	G1/8			G1/4, G3/8, G1/2		
			G1/4			G3/8, G1/2			
			G3/8			G1/2			
			G1/2			G3/4, G1			
			G3/4			G1			
Extension									
	NPFC-E...	M5	–	–	M5	–	–	7	
		–	G1/8		–	G1/8			
			G1/4			G1/4			
			G3/8			G3/8			
			G1/2			G1/2			
Double nipple									
	NPFC-D	M3	–	–	M3	–	–	8	
		M5			M5	G1/8			
		M7			–	G1/8			
		–	G1/8			G1/8, G1/4, G3/8			
			G1/4			G1/4, G3/8, G1/2			
			G3/8			G3/8, G1/2			
			G1/2			G1/2, G3/4			
			G3/4			G3/4			
			–	R1/8		–	R1/8, R1/4, R3/8		
				R1/4			R1/4, R3/8, R1/2		
				R3/8			R3/8, R1/2		
				R1/2			R1/2, R3/4		
				R3/4			R3/4		
		R1			R1				
Reducing nipple – internal thread/external thread									
	NPFC-R	M5	–	–	–	G1/8	–	9	
		–	G1/8			G1/4, G3/8			
			G1/4			G3/8			
			G3/8			G1/2			
Reducing nipples – external thread/internal thread									
	NPFC-R	M5	–	–	M3	–	–	10	
		M7			M5				
		–	G1/8			M5	G1/8		
			G1/4			–	G1/8, G1/4		
			G3/8				G1/4, G3/8		
			G1/2				G1/4, G3/8, G1/2		
			G3/4				G1/2, G3/4		

Threaded fittings NPFC

Technical data

Reducing nipple NPFC-R

External thread/internal thread



Dimensions and ordering data								
Connection		L1	L2	$\approx \varnothing 1$	Weight/piece [g]	Part no.	Type	PU ¹⁾
D1	D2							
M5	M3	6.5	4	7	1.2	8069227	NPFC-R-M5-M3-MF	10
M7	M5	12	5	10	5.1	8069228	NPFC-R-M7-M5-MF	10
G $\frac{1}{8}$	M5	10.5	6	14	8.2	8030307	NPFC-R-G18-M5-MF	10
G $\frac{1}{4}$	M5	13	8	17	17.6	8069229	NPFC-R-G14-M5-MF	10
	G $\frac{1}{8}$	13	8	17	10.8	8030308	NPFC-R-G14-G18-MF	10
						8069230	NPFC-R-G14-G18-MF-P100	100
G $\frac{3}{8}$	G $\frac{1}{8}$	14	9	19	19.4	8030309	NPFC-R-G38-G18-MF	10
	G $\frac{1}{4}$	14	9	19	13	8030310	NPFC-R-G38-G14-MF	10
						8069231	NPFC-R-G38-G14-MF-P50	50
G $\frac{1}{2}$	G $\frac{1}{4}$	15.5	10	24	31.4	8030311	NPFC-R-G12-G14-MF	10
						8069232	NPFC-R-G12-G14-MF-P50	50
	G $\frac{3}{8}$	15.5	10	24	22.1	8030312	NPFC-R-G12-G38-MF	10
G $\frac{3}{4}$						8069233	NPFC-R-G12-G38-MF-P50	50
	G $\frac{1}{4}$	17.5	12	30	72.3	8069234	NPFC-R-G34-G14-MF	10
	G $\frac{3}{8}$	17.5	12	30	64	8069235	NPFC-R-G34-G38-MF	10
	G $\frac{1}{2}$	17.5	12	30	39.3	8030313	NPFC-R-G34-G12-MF	10
G1						8069236	NPFC-R-G34-G12-MF-P50	50
	G $\frac{1}{2}$	20	12	40	133.9	8069237	NPFC-R-G1-G12-MF	10
	G $\frac{3}{4}$	20	12	40	96.2	8069238	NPFC-R-G1-G34-MF	10

1) Packaging unit quantity