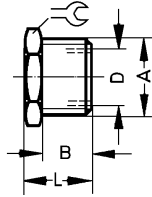
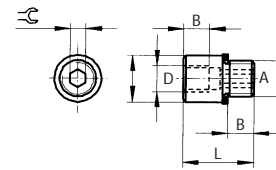


Reducing Bushing Type D-... With Sealing Ring



D-M5i-M7a-ISK



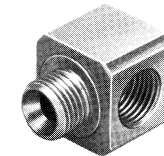
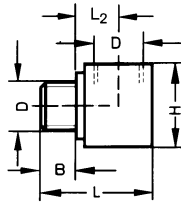
= wrench size (mm)



Order Number		Thread D	Thread A	Material	Weight lb / kg	Dimensions		
Part No.	Type					B in / mm	L in / mm	 in / mm
30980	D-M3i-M5 a-S9*	M 3	M 5	X12CrNiS188	0.0022 / 0.001	0.16 / 4	0.24 / 6	0.31 / 8
161359	D-M5i-M7 a-ISK	M 5	M 7	Copper, Zinc, Nickel Plated	0.007 / 0.003	0.20 / 5	0.53 / 13.5	0.12 / 3
3842	D-M5i-1/8 a	M 5 (0.24 in / 6 mm deep)	G 1/8 ISO	Al	0.022 / 0.010	0.20 / 5	0.41 / 10.3	0.51 / 13
3577	D-1/8i-1/4 a	G 1/8 ISO	G 1/4 ISO	Brass	0.018 / 0.008	0.18 / 4.5	0.43 / 10.8	0.67 / 17
3581	D-1/4i-3/8 a	G 1/4 ISO	G 3/8 ISO		0.031 / 0.014	0.33 / 8.5	0.59 / 14.9	0.75 / 19
28446	D-1/4-1/2 a	G 1/4 ISO	G 1/2 ISO					
3585	D-3/8i-1/2 a	G 3/8 ISO	G 1/2 ISO		0.055 / 0.025	0.45 / 11.5	0.78 / 19.9	0.94 / 24
3588	D-1/2i-3/4 a	G 1/2 ISO	G 3/4 ISO		0.099 / 0.045	0.47 / 12	0.88 / 22.4	1.26 / 32
9168	D-3/4i-1 a	G 3/4 ISO	G 1 ISO		0.121 / 0.055	0.51 / 13	0.83 / 21	1.42 / 36
7865	D-1/8i-1/4 a-NPT	1/8 NPT	1/4 NPT		0.050 / 0.023	0.51 / 13	0.94 / 24	0.67 / 17

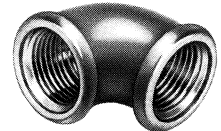
*Corrosion and acid resistant design.

Elbow Type G-...



G-1/2-I/I
G-3/4-I/I

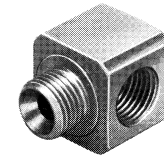
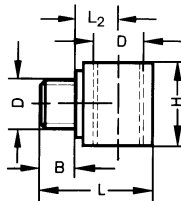
M 5 to 3/8



1/2 to 3/4

Order Number		Thread D	Orifice Size in / mm	Material	Weight lb / kg	Dimensions			
Part No.	Type					B in / mm	H in / mm	L in / mm	L ₂ in / mm
3558	G-M5-A/I	M 5	0.08 / 2	Al, blue	0.007 / 0.003	0.18 / 4.5	0.39 / 10	0.58 / 14.7	0.20 / 5.2
3614	G-1/8-A/I	G 1/8 ISO	0.16 / 4	anodized	0.022 / 0.010	0.26 / 6.5	0.63 / 16	0.90 / 22.8	0.33 / 8.3
3615	G-1/4-A/I	G 1/4 ISO	0.26 / 6.5	with sealing ring	0.048 / 0.022	0.33 / 8.5	0.87 / 22	1.14 / 28.9	0.41 / 10.4
3616	G-3/8-A/I	G 3/8 ISO	0.35 / 9		0.081 / 0.037	0.41 / 10.5	1.06 / 27	1.30 / 32.9	0.45 / 11.4
2092	G-1/2-A/I	G 1/2 ISO	0.55 / 14	Brass	0.178 / 0.081	0.39 / 10	1.54 / 39	1.54 / 39	–
2093	G-3/4-A/I	G 3/4 ISO	0.75 / 19		0.312 / 0.142	0.39 / 10	1.85 / 47	1.85 / 47	–

Branch Tee Type FR-...



FR-1/2-I/I
FR-3/4-I/I



Order Number		Thread D	Orifice Size in / mm	Material	Weight lb / kg	Dimensions			
Part No.	Type					B in / mm	H in / mm	L in / mm	L ₂ in / mm
3559	FR-M5-A/I	M 5	0.08 / 2	Al, blue	0.007 / 0.003	0.18 / 4.5	0.39 / 10	0.58 / 14.7	0.20 / 5.2
3583	FR-1/8-A/I	G 1/8 ISO	0.16 / 4	anodized	0.022 / 0.010	0.26 / 6.5	0.63 / 16	0.90 / 22.8	0.33 / 8.3
3586	FR-1/4-A/I	G 1/4 ISO	0.26 / 6.5	with sealing ring	0.044 / 0.020	0.33 / 8.5	0.87 / 22	1.14 / 28.9	0.41 / 10.4
3587	FR-3/8-A/I	G 3/8 ISO	0.35 / 9		0.073 / 0.033	0.41 / 10.5	1.06 / 27	1.30 / 32.9	0.45 / 11.4
2075	FR-1/2-I/I	G 1/2 ISO	0.55 / 14	Brass	0.264 / 0.120	0.39 / 10	1.93 / 49	1.54 / 39	–
2076	FR-3/4-A/I	G 3/4 ISO	0.75 / 19		0.396 / 0.180	0.39 / 10	2.32 / 59	1.85 / 47	–

Product Range and Company Overview

A Complete Suite of Automation Services

Our experienced engineers provide complete support at every stage of your development process, including: conceptualization, analysis, engineering, design, assembly, documentation, validation, and production.



Custom Automation Components
Complete custom engineered solutions



Custom Control Cabinets
Comprehensive engineering support and on-site services



Complete Systems
Shipment, stocking and storage services

The Broadest Range of Automation Components

With a comprehensive line of more than 30,000 automation components, Festo is capable of solving the most complex automation requirements.



Electromechanical
Electromechanical actuators, motors, controllers & drives



Pneumatics
Pneumatic linear and rotary actuators, valves, and air supply



PLCs and I/O Devices
PLC's, operator interfaces, sensors and I/O devices

Supporting Advanced Automation... As No One Else Can!

Festo is a leading global manufacturer of pneumatic and electromechanical systems, components and controls for industrial automation, with more than 12,000 employees in 56 national headquarters serving more than 180 countries. For more than 80 years, Festo has continuously elevated the state of manufacturing with innovations and optimized motion control solutions that deliver higher performing, more profitable automated manufacturing and processing equipment. Our dedication to the advancement of automation extends beyond technology to the education and development of current and future automation and robotics designers with simulation tools, teaching programs, and on-site services.

Quality Assurance, ISO 9001 and ISO 14001 Certifications

Festo Corporation is committed to supply all Festo products and services that will meet or exceed our customers' requirements in product quality, delivery, customer service and satisfaction.

To meet this commitment, we strive to ensure a consistent, integrated, and systematic approach to management that will meet or exceed the requirements of the ISO 9001 standard for Quality Management and the ISO 14001 standard for Environmental Management.



© Copyright 2008, Festo Corporation. While every effort is made to ensure that all dimensions and specifications are correct, Festo cannot guarantee that publications are completely free of any error, in particular typing or printing errors. Accordingly, Festo cannot be held responsible for the same. For Liability and Warranty conditions, refer to our "Terms and Conditions of Sale", available from your local Festo office. All rights reserved. No part of this publication may be reproduced, distributed, or transmitted in any form or by any means, electronic, mechanical, photocopying or otherwise, without the prior written permission of Festo. All technical data subject to change according to technical update.



Printed on recycled paper at New Horizon Graphic, Inc., FSC certified as an environmentally friendly printing plant.