

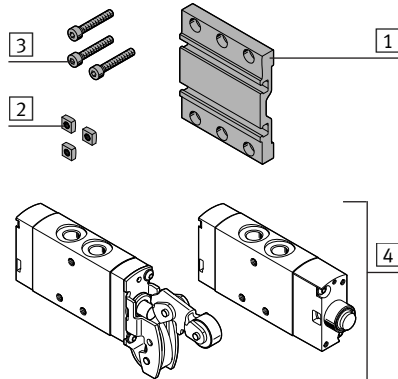
Mounting kit VAME-R4-20-PA

FESTO

Festo AG & Co. KG

Postfach
73726 Esslingen
Germany
+49 711 347-0
www.festo.com

1. Parts list



- 1 Mounting plate (1x)
VAME-R4-20-PA
- 2 Square nut (3x)
- 3 Screw (3x)

Not included in delivery:

- 4 Valve (1x)
VMEF...

2. Intended use

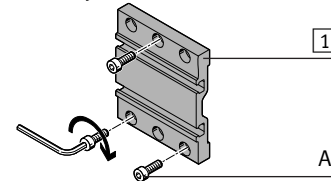
Mounting kit VAME-R4-20-PA:

- Attachment of a valve 4 to a stable surface.
- Adjustment of switching point (C).

3. Safety instructions and notes on mounting

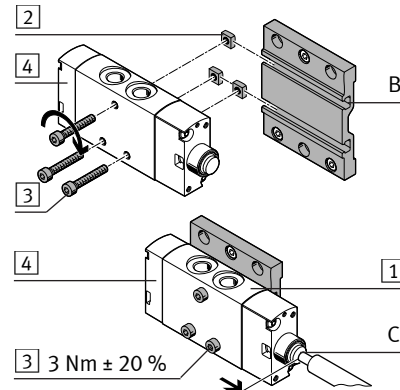
- Switch off compressed air before mounting work.
- When mounting a 3/2-way valve 4, a square nut 2 and a screw 3 are left over.
- Refer to the catalogue for the switching positions of the various valves 4 (→ www.festo.com/catalogue).

4. Preassembly



- Mount the mounting plate 1 with screws (A) that are suitable for the installation situation.

5. Mounting



- Place square nuts 2 into the mounting slots (B).
- Align the square nuts 2.
- Secure the valve 4 to the square nuts 2 by using the screws 3.

- Align the valve 4 on the mounting plate 1 with the switching point (C).
- Tighten screws 3.